

**TIGER DRYLAC®**

# special effect

powder coatings

volume 2



**TIGER** Drylac®  
Powder Coatings

**Dormant Transparent and Clear:** Dormant Transparents are applied as the base coat in this system. The flamboyant shades of color will not evolve until a clear topcoat is applied. Samples in this chart, all top coated with our Glossy Clear (49/00530) are just a few of the many variations of attractive finishes that can be achieved by top coating with a variety of our Clears and Glitters. Choices:

Clear Coatings available:

- Clear Glossy 39/00020
- Clear Glossy 49/00530
- Clear Semi Gloss 49/00280
- Clear Matte 16/00030
- Clear Ice Matte 69/00300
- Clear Rough Texture Glossy 89/00200

Glitter Coatings available:

- Gold 49/00310
- Silver 49/00320
- Red 49/00330
- Blue 49/00340
- Green 49/00350
- Twilight 49/00390

**Textures and Matte Finishes:** An assortment of textured and matte finishes (not shown in this chart) is available in numerous RAL colors for interior and exterior applications. Finishes include matte, semi gloss, fine texture, rough texture glossy and rough texture matte. Please check with your local Tiger Drylac office for availability and brochures.

**Standard Product Catalog:** For a summary listing of all other colors and finishes available please refer to our Standard Product Catalog.

## Notes

Colors and textures have been matched as closely as possible. Paper and ink limitations as well as influence of heat and light account for differences from actual coatings. To aid in final product selection please contact your local Tiger Drylac office for a powder-coated Q-Panel of the product of your choice.

**Datasheets:** Periodically updated datasheets, showing cure parameters, test results, pretreatment information and more are available for all products in this chart. Please contact your local Tiger Drylac office for the latest version.

**Custom Colors:** Should our vast selection of standard finishes not be exactly what an application calls for, we will be happy to provide custom colors (220 lb minimum order) with quick 7 to 10 day turn around times.

**Fluorescent:** 1- and 2-coat fluorescent finishes have limited UV stability.

**Hammertones:** Series 39 Hammertones are suitable for exterior applications. Film thickness guidelines must be observed. Series 09 as well as Series 89 low/fast cure Hammertones are for interior applications.

**Antico:** For that out-of-the ordinary look, simulating natural stone and oxidation of copper, exterior grade Anticos can provide a decorative finishing solution.

# special effects

## Fluorescent One-Coat



Yellow  
49/22200



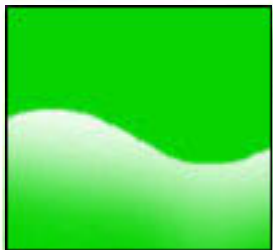
Red-Orange  
49/24620



Orange  
49/24610



Light Pink  
49/30520



Green  
49/51340

## Fluorescent Two-Coat (below)



Neon Yellow  
59/20043



Neon Pink  
59/30075

## Fluorescent Two-Coat



Yellow 49/21500  
White Basecoat 49/11000



Orange 49/24080  
White Basecoat 49/11000

## Pearlescent (below)



Bright Pink 49/30430  
White Basecoat 49/11000



Red 49/30760  
White Basecoat 49/11000



Pink 49/32600  
White Basecoat 49/11000



Glow-In-The-Dark 49/52100  
White Basecoat 49/11000



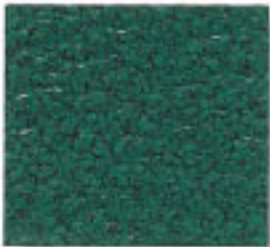
Pearlescent White Metallic  
49/18140



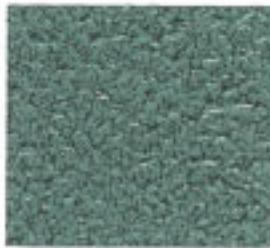
**Hammertone  
Exterior**



**Sapphire**  
39/40002



**Malachite**  
39/40003



**Reseda**  
39/50002



**Sepia**  
39/60002



**Black**  
39/80005

**Hammertone  
Interior (below)**



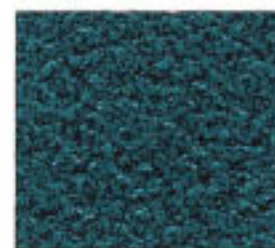
**Silver**  
39/90020



**Hammertone  
Interior**



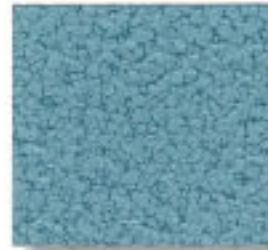
**Red**  
09/32870



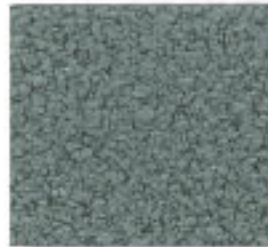
**Capri**  
09/40750



**Sapphire**  
09/40760



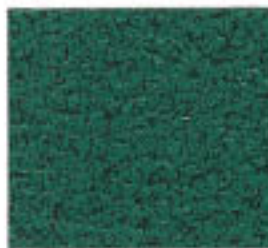
**Pale Blue**  
09/43000



**Reseda**  
09/50560



**Green**  
09/50570



**Malachite**  
09/50930



**Goldleaf**  
09/53120



**Sepia**  
09/60660



**Silver**  
09/90250



**Gold Brown**  
09/90280



**Light Silver**  
09/90980



**Nu-Purple**  
89-40127

## ■ Antico



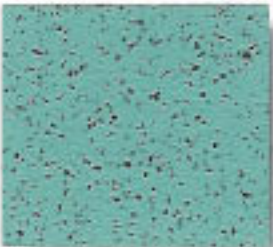
**Nu-Kiwi**  
89/53127



**Sandstone**  
59/15830



**Nu-Black**  
89/90087



**Patina**  
59/55410



**Nu-Silver**  
89/90257



**Copper Leaf**  
59/55490



**Nu-Gold Brown**  
89/90287



**Slate**  
59/76940



**Nu-Light Silver**  
89/90987



**Granite**  
59/77240

## ■ Dormant Transparent and Clear



**Blue 49/40940**  
Clear Glossy Topcoat



**Sparkle Sky Blue 49/40074**  
Clear Glossy Topcoat



**Violet 49/41100**  
Clear Glossy Topcoat



**Sparkle Green 49/50024**  
Clear Glossy Topcoat



**Sparkle Copper 49/25002**  
Clear Glossy Topcoat



**Sparkle Granny Smith 49/50032**  
Clear Glossy Topcoat



**Sparkle Light Orange 49/25006**  
Clear Glossy Topcoat



**Sparkle New Red 49/30028**  
Clear Glossy Topcoat



## ■ Transparent and Candy

All Transparent and Candy colors are shown over nickel-plated substrate. Alternate substrates: Brushed Aluminum, Chrome, Tiger Drylac 49/91260 Mirror Silver or 49/90450 Sparkle Silver



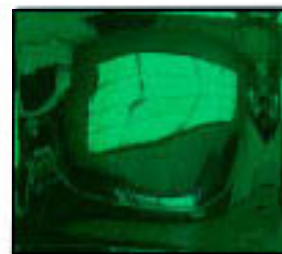
■ Gold  
49/30170



■ Transparent Blue  
49/46110



■ Candy Teal  
49/42130



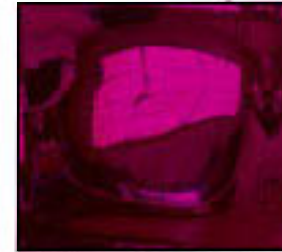
■ Transparent Green  
49/55730



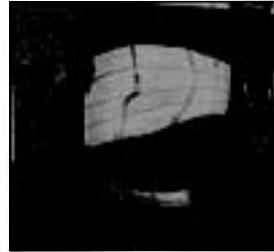
■ Candy Blue  
49/43600



■ Brass  
49/20180



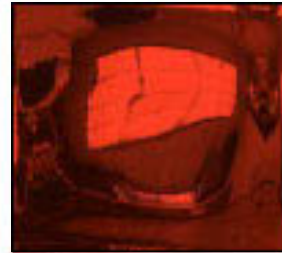
■ Candy Raspberry  
49/31570



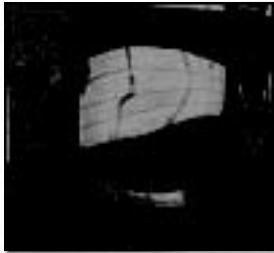
■ Black Chrome  
Hybrid 09/80930



■ Copper  
49/63130



■ Candy Red  
49/33340



■ Black Chrome  
49/80000



■ Transparent Red  
49/35810



■ Candy Purple  
49/41480

## Note

Colors and textures have been matched as closely as possible. Paper and ink limitations as well as influence of heat and light account for differences from actual coatings.

## Offices and Warehouses

### West Coast

1251 E. Belmont Street  
Ontario, CA 91761  
Phone: (909) 930-9100  
Fax: (909) 930-9111  
customerservicewest@tigerdrylac.com

### Northwest

18808 142nd Avenue N.E.  
Suite 5B  
Woodinville, WA 98072  
Phone: (425) 481-3160  
Fax: (425) 481-1136  
customerservicenw@tigerdrylac.com

### Midwest

3855 Swenson Avenue  
St. Charles, IL 60174  
Phone: (630) 513-9999  
Fax: (630) 513-9998  
customerservicemw@tigerdrylac.com

### East Coast

1100 Commons Blvd.  
Reading, PA 19605  
Phone: (610) 926-8148  
Fax: (610) 926-8149  
customerserviceeast@tigerdrylac.com

### Southeast

3400 Town Pt. Drive NW  
Suite 140  
Kennesaw, GA 30144  
Phone: (770) 218-2490  
Fax: (770) 218-2495  
customerserviceeast@tigerdrylac.com

### South

339 Exchange Drive  
Arlington, TX 76011  
Phone: (817) 277-7995  
Fax: (817) 277-1931  
customerservicesouth@tigerdrylac.com





[www.tigerdrylac.com](http://www.tigerdrylac.com)

**Offices and Warehouses**

**West Coast**

1251 E. Belmont Street  
Ontario, CA 91761  
Phone: (909) 930-9100  
Fax: (909) 930-9111  
[customerservicewest@tigerdrylac.com](mailto:customerservicewest@tigerdrylac.com)

**Northwest**

18808 142nd Avenue N.E., Suite 5B  
Woodinville, WA 98072  
Phone: (425) 481-3160  
Fax: (425) 481-1136  
[customerservicenw@tigerdrylac.com](mailto:customerservicenw@tigerdrylac.com)

**Midwest**

3855 Swenson Avenue  
St. Charles, IL 60174  
Phone: (630) 513-9999  
Fax: (630) 513-9998  
[customerservicemw@tigerdrylac.com](mailto:customerservicemw@tigerdrylac.com)

**East Coast**

1100 Commons Blvd.  
Reading, PA 19605  
Phone: (610) 926-8148  
Fax: (610) 926-8149  
[customerserviceeast@tigerdrylac.com](mailto:customerserviceeast@tigerdrylac.com)

**Southeast**

3400 Town Pt. Drive NW, Suite 140  
Kennesaw, GA 30144  
Phone: (770) 218-2490  
Fax: (770) 218-2495  
[customerservicese@tigerdrylac.com](mailto:customerservicese@tigerdrylac.com)

**South**

339 Exchange Drive  
Arlington, TX 76011  
Phone: (817) 277-7995  
Fax: (817) 277-1931  
[customerservicesouth@tigerdrylac.com](mailto:customerservicesouth@tigerdrylac.com)



Member of the  
**Powder Coating Institute**